



FOR LEASE - 717-564-0832

Location Description

Address: 359 East Park Drive
Harrisburg, PA 17111
Cross Street: N/A
County: Dauphin
Municipality: Swatara Twp
Tax Parcel #: 63-001-068
Directions: I-83 to Union Deposit
Road exit, East Park
Drive, property on left
East Park Drive
Access:

Building Description

Space Available: 34,777 s.f.
Build Out: "As Is"
Class: B
Construction: Brick masonry
of Units: 1
Age: Built 1991
Roof Type/Material: Flat/Rubber
Floor Type/Material: Cement/Carpet & Vinyl
Floors: 1
Elevator: 0
Ceiling Hgt min/max:
Type:
Sprinklers:
Lighting: Fluorescent
HVAC/Source: Forced hot air; central
AC/Gas & Electric
Restrooms: Men's & Women's
handicapped
Business ID Sign: Yes
Parking Spaces: Ample parking
Handicap Access: Yes
Parking Description: In Common

Site Description:

Frontage: Along East Park Drive
Zoning: C-3 Commercial Mixed
Topography: Level
Public Transportation: Yes

Utilities/Services Paid Directly By

Water:	T	Janitorial:	T
Sewer:	T	Heat:	T
Trash:	T	HVAC Repairs:	T
Electricity:	T	Interior Repairs:	T
Air Conditioning:	T	Parking Maint.	L
Plumbing Repair:	T	Structure Repairs:	L
Lawn Maint:	L	Snow Removal:	L
Taxes:	T	Light Bulbs:	T
Insurance:	T		

T=Tenant; L=Landlord

Utility	Provider	Location	Size/Capacity
Electricity:	PPL	On Site	
Gas:	UGI	On Site	N/A
Water:	Public	On Site	N/A
Sewer:	Public	On Site	N/A

Comments

Special Features: Centralized location
Remarks: Location combines easy
access and convenience
for the entire Harrisburg
market

Lease Rate/Terms

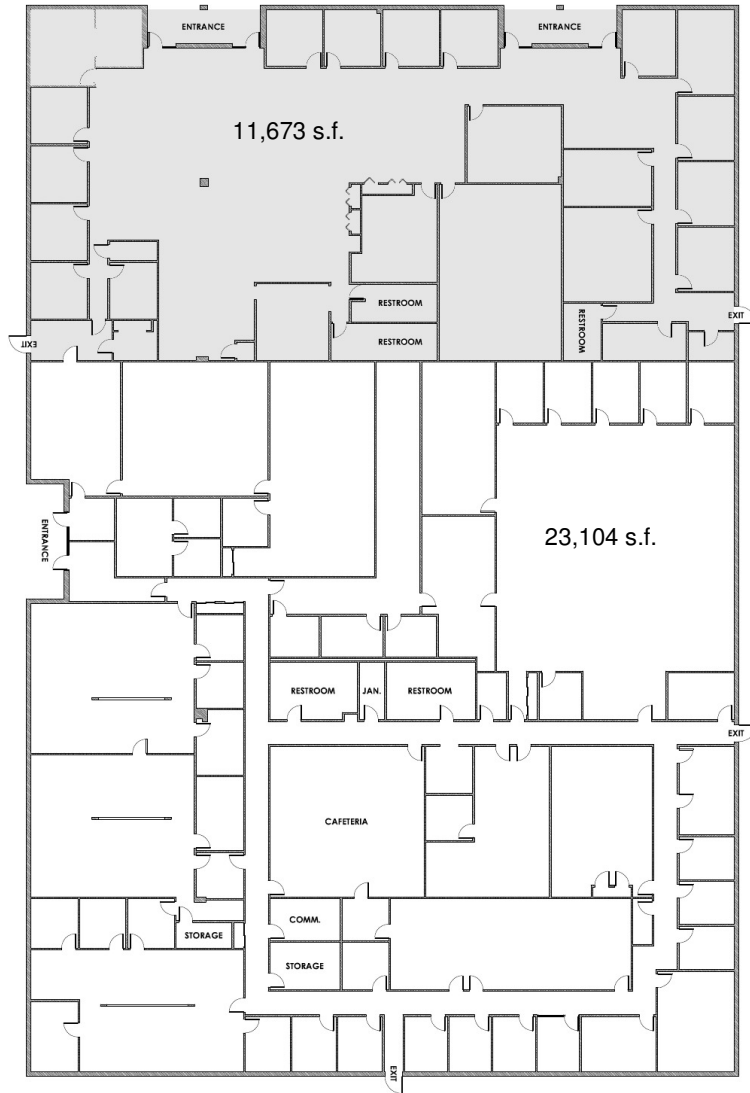
S.F.	Rate:	Term:	Comments:
11,673		5 years	
23,104		5 years	



750 East Park Drive
Harrisburg, PA 17111
717-564-0832 Telephone
717-564-4759 Fax

Information deemed reliable, but no warranty is made as to the accuracy thereof, and it is submitted subject to errors, omissions, change of price or other conditions, prior sale or lease, or withdrawal without notice. All sizes approximate.

FLOOR PLAN



LOCATION – 359 EAST PARK DRIVE, HARRISBURG, PA

