



FOR LEASE - 717-564-0832

Location Description

Address: 353 Markle Drive
Harrisburg, PA 17111

Cross Street: East Park Drive

County: Dauphin

Municipality: Swatara Township

Tax Parcel #: 63-001-075

Directions: I-83 to Union Deposit Road exit, East Park Drive to Markle Drive, property on left

Access: Markle Drive

Building Description

Space Available: 1,867 s.f. Avail Ste 2
4,506 s.f. Avail Ste 3
4,360 s.f. Avail Ste 5
4,346 s.f. Avail Ste 6
"As Is"

Build Out:

Class: B+

Construction: Brick masonry

of Units: 3

Age: Built 1997

Roof Type/Material: Flat/Rubber

Floor Type/Material: Carpet/Vinyl

Floors: 1

Elevator: 0

Ceiling Hgt min/max: 10' /10'

Type: Acoustical tile

Sprinklers: No

Lighting: Fluorescent

HVAC/Source: Forced hot air; central AC / Gas and Electric

Restrooms: Men's & Women's handicapped

Business ID Sign: Yes

Parking Spaces: 4.7/1,000 s.f.

Handicap Access: Yes

Parking Description: In Common

Site Description:

Frontage: Visible from I-83

Zoning: C-G Commercial General

Topography: Level

Public Transportation: Yes

Utilities/Services Paid Directly By

Water:	T	Janitorial:	T
Sewer:	T	Heat:	T
Trash:	T	HVAC Repairs:	T
Electricity:	T	Interior Repairs:	T
Air Conditioning:	T	Parking Maint.	T
Plumbing Repair:	T	Structure Repairs:	L
Lawn Maint:	T	Snow Removal:	T
Taxes:	T	Light Bulbs:	T
Insurance:	T		

T=Tenant; L=Landlord

Utility	Provider	Location	Size/Capacity
Electricity:	PPL	On Site	
Gas:	UGI	On Site	N/A
Water:	Public	On Site	N/A
Sewer:	Public	On Site	N/A

Comments

Special Features: Located on the southeast side of East Park Drive, the elevation of this building offers panoramic views to the south and west.

Remarks: The East Park Drive area has become the location of choice for some of Harrisburg's leading businesses.

Lease Rate/Terms

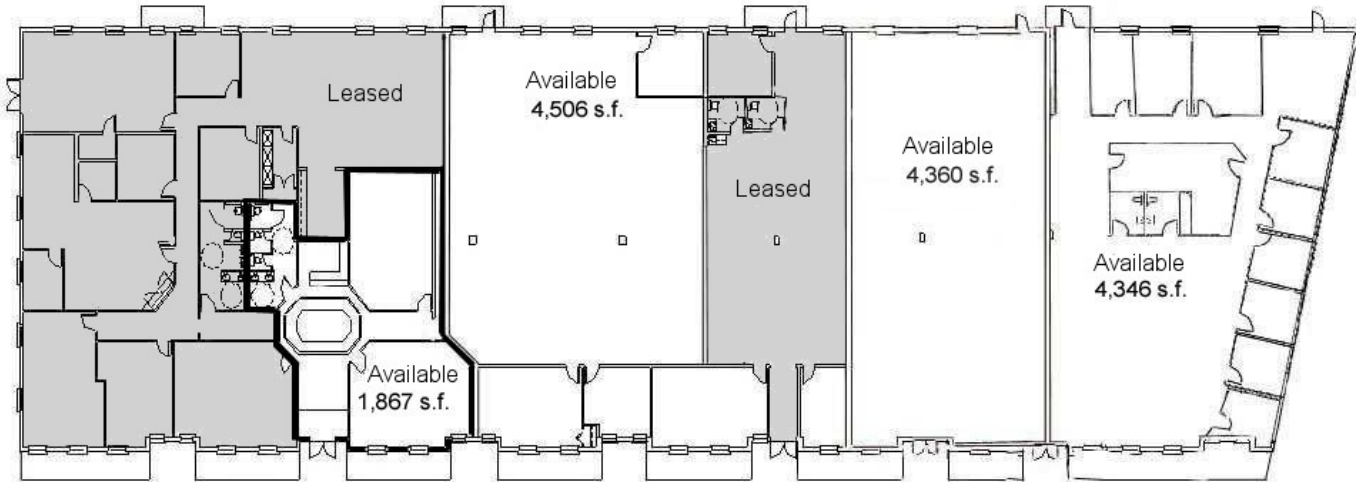
S.F.	Rate:	Term:	Comments:
1,867 s.f.		5 Years	Ste 2
4,506 s.f.		5 Years	Ste 3
4,360 s.f.		5 Years	Ste 5
4,346 s.f.		5 Years	Ste 6



750 East Park Drive
Harrisburg, PA 17111
717-564-0832 Telephone
717-564-4759 Fax

Information deemed reliable, but no warranty is made as to the accuracy thereof, and it is submitted subject to errors, omissions, change of price or other conditions, prior sale or lease, or withdrawal without notice. All sizes approximate.

FLOOR PLAN



353 Markle Drive
Harrisburg, PA 17111

LOCATION – 353 MARKLE DRIVE, HARRISBURG, PA

